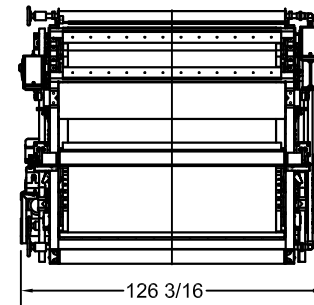
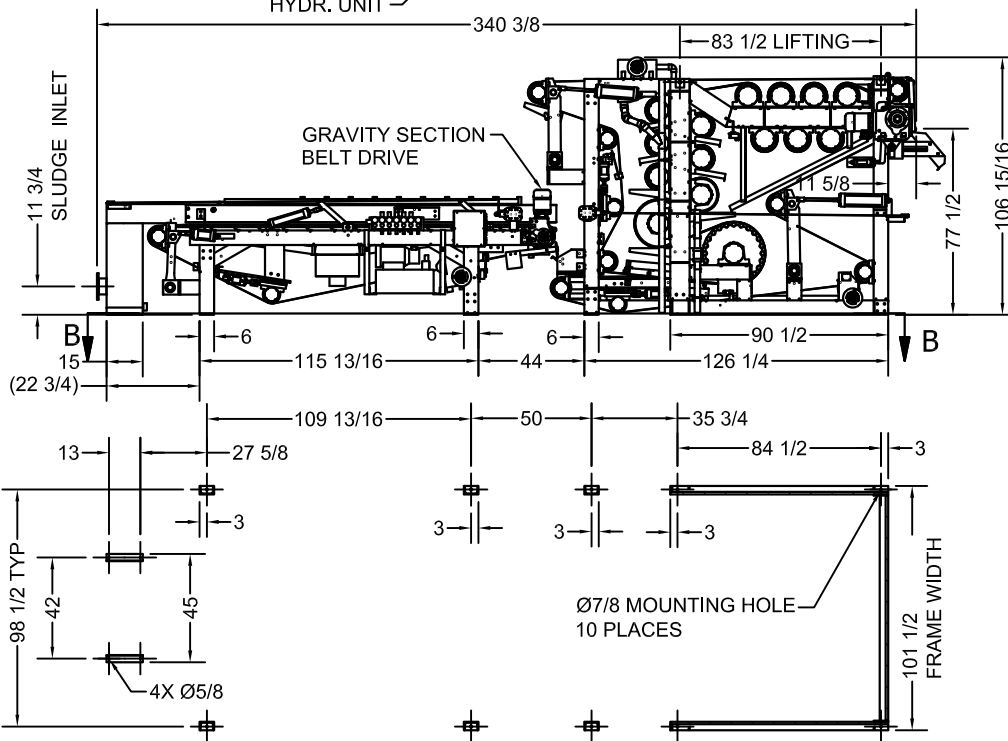


NOTES:
 LOCATION OF PLANT WATER CONNECTION FOR BELT WAS SYSTEM VARIES ACCORDING TO LOCATION OF WASH WATER BOOSTER PUMP AND USE OF OPTIONAL WASH WATER RECYCLE.

LIFTING POINTS ARE MIN. 1 1/4" DIA FOR ALL LOCATIONS.

GBT SECTION DRY WEIGHT = 6,900 LBS
 GBT SECTION WET WEIGHT = 8,150 LBS

PRESSURE SECTION DRY WEIGHT = 26,610 LBS
 PRESSURE SECTION WET WEIGHT = 28,110 LBS



SECTION B-B
 FOOT PRINT



| | |
|--|-------|
| DRAWN TMP | |
| APPROVED | |
| G.E.C. TOLERANCES UNLESS OTHERWISE SPECIFIED | |
| FRACTIONAL DIM | ±1/64 |
| DECIMAL DIM | ±.005 |
| ANGLE | ± 1/2 |
| SURFACE FINISH | 125 |

| | | |
|--|------------------------|--------------|
| CHARTER MACHINE COMPANY 55 WESTER AVE METUCHEN N.J. 08840 | | |
| TITLE 3 BELT TOWER PRESS 22.593SH WITH FLOCC TANK MACHINE VIEWS | | |
| SIZE | DWG NO. 22593SHCF02 | REV 2 |
| SCALE | NONE | SHEET 1 OF 1 |

WEBSITE DOWNLOADS ARE FOR REFERENCE ONLY. CONTACT SALES FOR FURTHER INFO.

PROPRIETARY: EXCEPT AS OTHERWISE AGREED IN WRITING, THE INFORMATION AND DESIGN DISCLOSED HEREIN ARE THE PROPERTY OF THE CHARTER MACHINE COMPANY AND MUST NOT BE COPIED OR DISTRIBUTED OUTSIDE THE CHARTER MACHINE COMPANY EXCEPT TO AUTHORIZED PERSONS WITH A GENUINE NEED TO KNOW WHO BY THE USE HEREOF ACKNOWLEDGE CHARTER MACHINE COMPANY OWNERSHIP AND AGREE TO MAINTAIN THIS INFORMATION AND DESIGN IN STRICT CONFIDENCE.