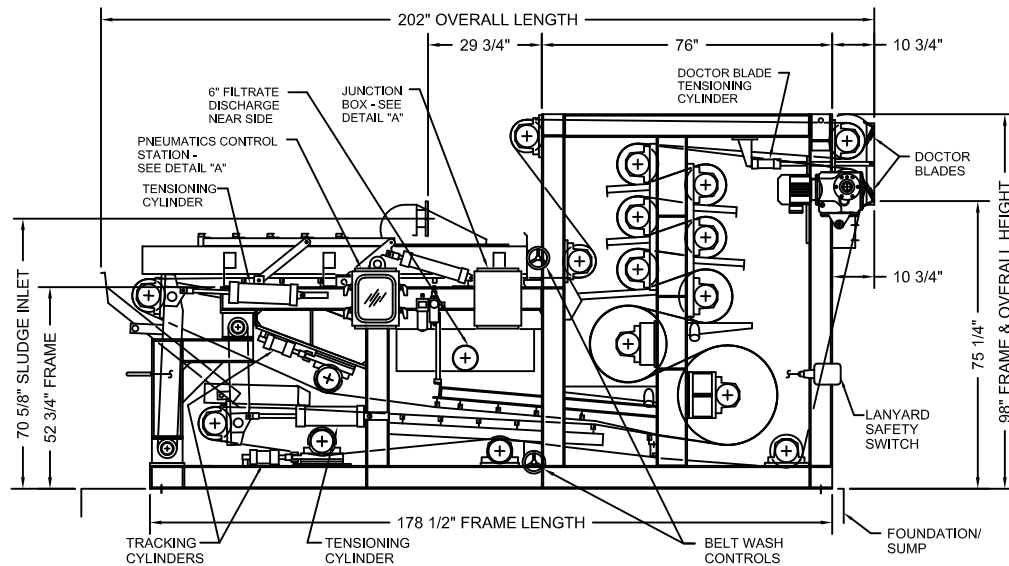


DETAIL "A"



NOTES:

LOCATION OF PLANT WATER CONNECTION FOR BELT WASH SYSTEM VARIES ACCORDING TO LOCATION OF WASH WATER BOOSTER PUMP AND USE OF OPTIONAL WASH WATER RECYCLE.

DRY WEIGHT - 19,000 LBS
WET WEIGHT - 20,750 LBS

THE 22" PRESSURE ROLL (< 1000 LBS) IS THE SINGLE HEAVIEST ITEM, EXCLUDING THE FRAME.

WEBSITE DOWNLOADS ARE FOR REFERENCE ONLY. CONTACT SALES FOR FURTHER INFO.



DRAWN TMP	
APPROVED	
G.E.C. TOLERANCES UNLESS OTHERWISE SPECIFIED	
FRACTIONAL DIM	±1/64
DECIMAL DIM	±.005
ANGLE	± 1/2
SURFACE FINISH	125

DRAWN BY TMP			CHARTER MACHINE COMPANY		
APPROVED			55 WESTER AVE METUCHEN N.J. 08840		
G.E.C. TOLERANCES UNLESS OTHERWISE SPECIFIED			TITLE TOWER PRESS TP17.41S		
FRACTIONAL DIM ±1/64			MACHINE VIEWS		
DECIMAL DIM ±.005			SIZE	DWG NO. TP17.41S-02	REV 2
ANGLE ± 1/2			SCALE NONE		SHEET 1 OF 1
SURFACE FINISH 125					