



High-Efficiency Screw Press

Seeing is Believing



Brought to you by



**Charter Machine
Company**

ROYAL SCREW PRESS FEATURES

1. High-efficiency low power

The Royal Screw Press achieves very high efficiency with a low power consumption due to the low-speed operation. The power range is from 0.75 kW to a maximum of 5.5 kW with flow rates up to 200 GPM while producing 25%+ T.S. cake.

2. Cleaning of the perforated screen by a removable cleaning device

By installing nozzles in a circumferential direction, it is the most efficient way to clean all of the parts of the drum screen. The cleaning nozzle ring moves laterally the entire length of the drum which maximizes cleaning efficiency while using the least amount of water.

3. Ultra-low noise

The low-speed operation combined with the low power motor, equates to the quietest screw press in the industry with only 30 dB noise level.

4. Large Capacity Processing

The Royal designed screw press has the option to have a drum thickener to concentrate low concentration incoming feed solids up to 3-5% T.S. which increases the throughput capacity of the press. This allows for a higher solids loading rate to the screw while maintaining a high volumetric rate to the system.

5. Low Maintenance Cost

The robust design utilizing thick stainless steel supports, screw, screen, and frame lead to very low maintenance costs.

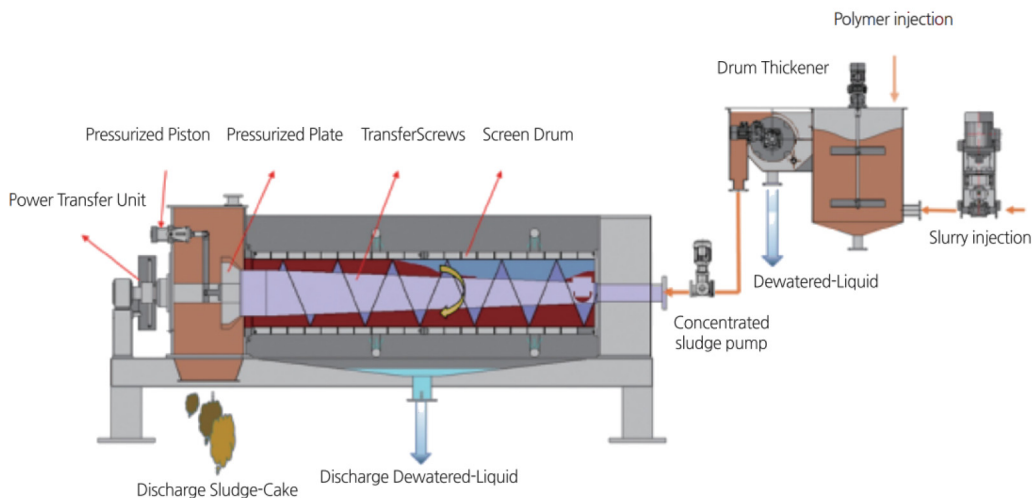
6. Greater Dewatering Capacity Design

The optional combination of the pre-thickening drum with the slow steady pressing operation which is controlled via a pneumatic backpressure plate allows for the most dewatering flexibility of any screw press in the industry.

7. Self Cleaning Nozzle Design

The self-cleaning nozzle design prevents nozzle clogging and longer time between maintenance.

FLWSHEET OF ROYAL SCREW PRESS



Highest Efficiency

Unsurpassed Quality

BENEFITS

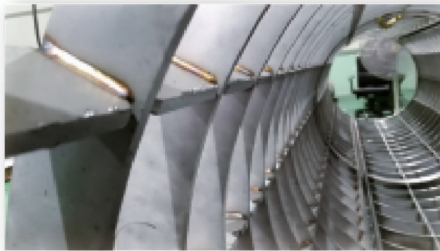
- *Low Noise
- *Low Power Consumption
- *Low Maintenance
- *Highest Capacity
- *Long Durability



3%-5% Higher Dried Solids Than Any Other Screw Press



SCREW BLADE



MAIN DRUM



CHAMBER & SHUTTLE WASHING DEVICE



MAIN SCREW FABRICATION

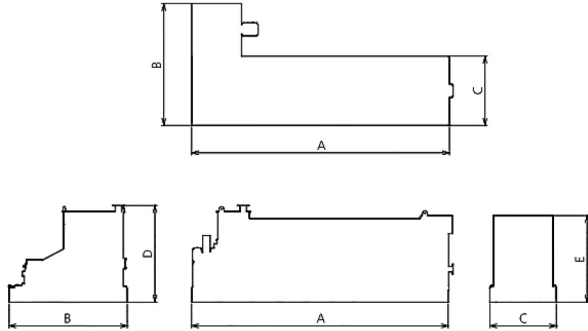


SELF CLEANING NOZZLE



DRUM THICKENER DEVICE

LEGEND



REFERENCES

3,000 Units

1,000 Sites

Over 35 Years

ROYAL SPECIFICATION

MODEL	AVERAGE GPM	Power (kW)	Weight (Ton)	DIMENSIONS (in)				
				A	B	C	D	E
KOWATS-300 SDT	35 GPM	0.75	1.5	110	30.5	30.5	57	44
KOWATS-500 SDT	55 GPM	1.5	4.1	163.5	43.7	43.7	78.7	54.7
KOWATS-700 SDT	80 GPM	2.2	7.6	223	100.5	56.7	80	71.7
KOWATS-900 SDT	110 GPM	3.3	11.0	287.5	110.3	71	92	88
KOWATS-1000 SDT	130 GPM	3.7	12.3	313.4	134	78.8	98.5	93.7
KOWATS-1200 SDT	175 GPM	5.5	17.6	342.5	150	87.5	106.3	101.6

- Throughput and dry solid would vary depending on the sludge characteristics and the specifications are subject to change without prior notice.

Over six decades of precision machine manufacturing.

