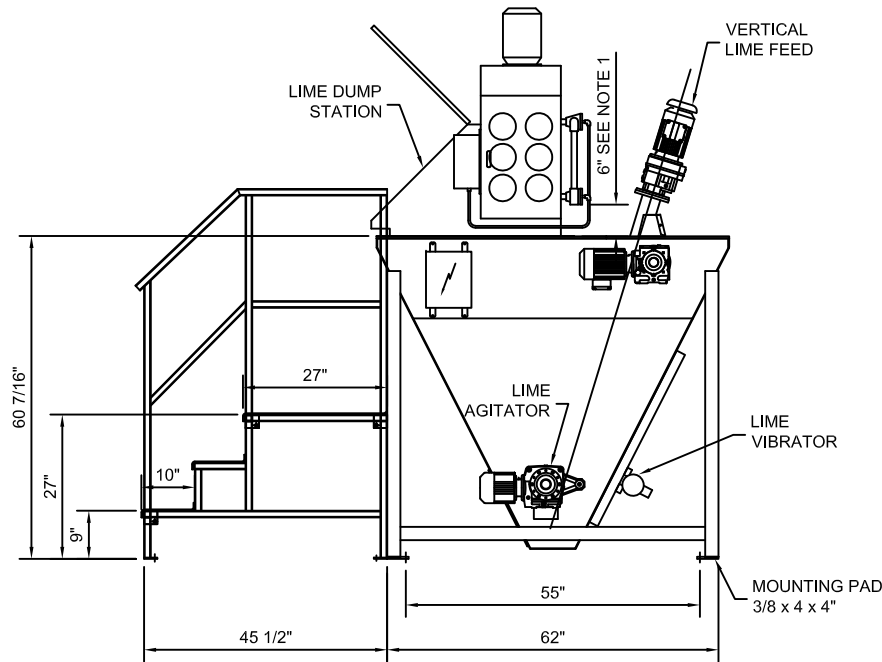
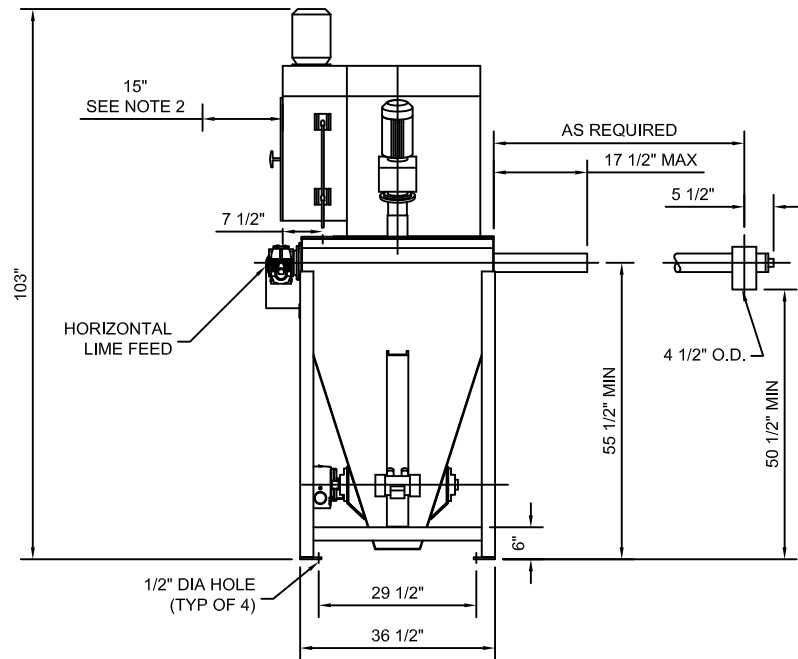


NOTES:

1. AIR SUPPLY MUST BE 3/4" MIN. WITH 3/4" NPT AIR CONNECTION. 4.0 SCFM OF AIR AT 80 PSIG REQUIRED.
2. 15" REQUIRED FOR FILTER TUBE REMOVAL.
3. APPROX. WEIGHT--1,000 LBS.



WEBSITE DOWNLOADS ARE FOR REFERENCE ONLY. CONTACT SALES FOR FURTHER INFO.



DRAWN	
TMP	
APPROVED	
G.E.C. TOLERANCES UNLESS OTHERWISE SPECIFIED	
FRACTIONAL DIM	±1/64
DECIMAL DIM	±.005
ANGLE	± 1/2
SURFACE FINISH	125

CHARTER MACHINE COMPANY 55 WESTER AVE METUCHEN N.J. 08840		
TITLE LIME FEED SYSTEM - LFS 1200		
MACHINE VIEWS		
SIZE A	DWG NO. LFS1200-02	REV 3
SCALE NONE	SHEET 1 OF 1	