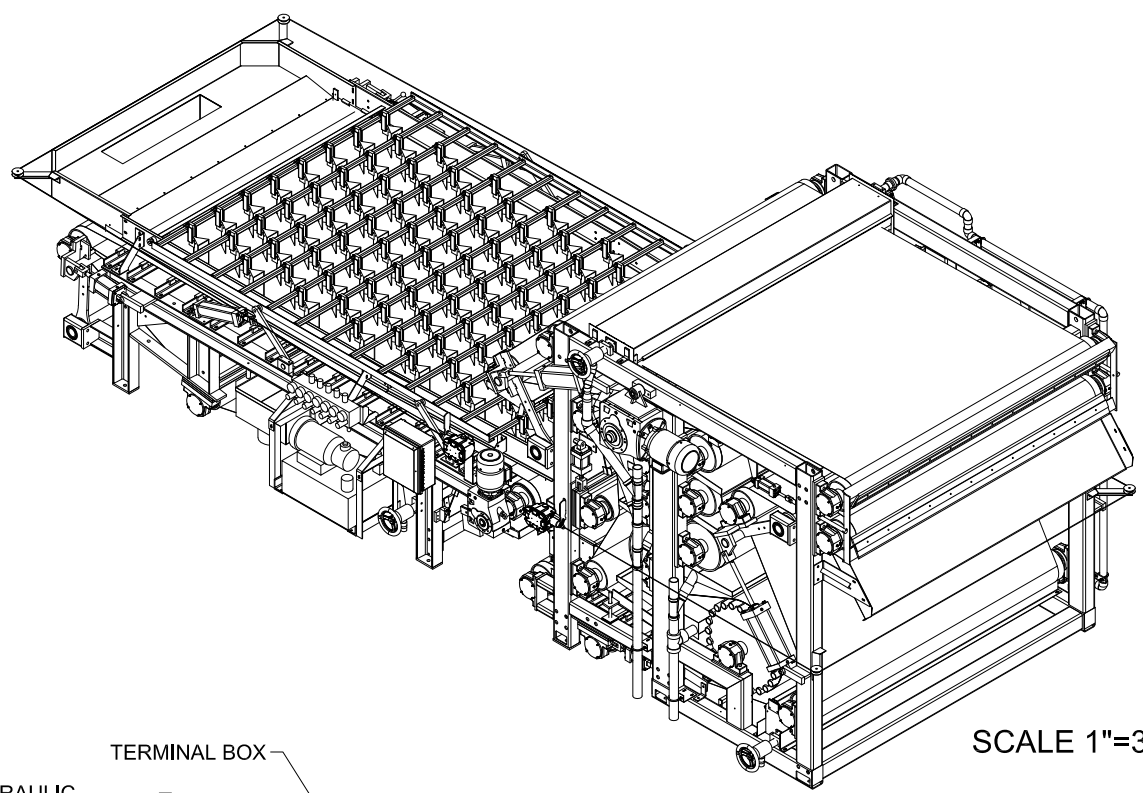
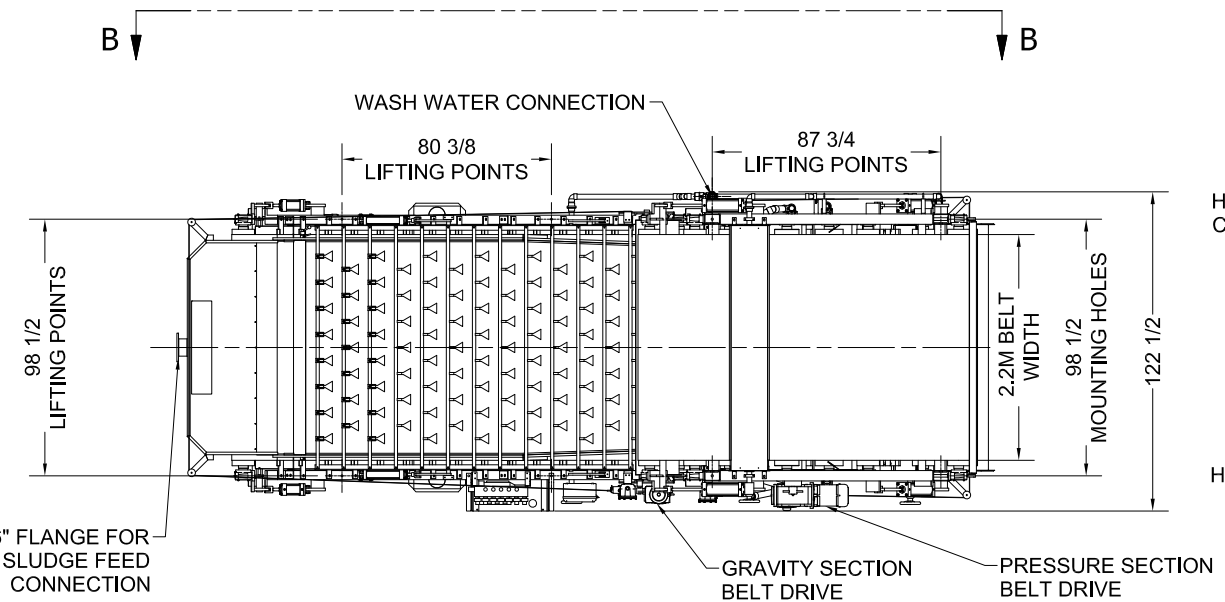


VIEW B-B
SCALE 1"=48"

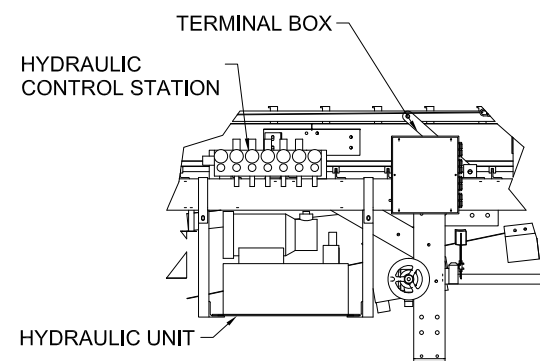


SCALE 1"=32"

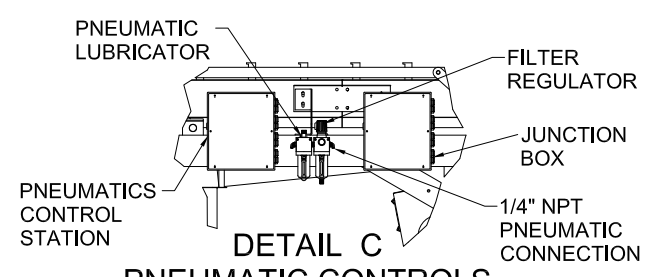


6" FLANGE FOR
SLUDGE FEED
CONNECTION

GRAVITY SECTION
BELT DRIVE PRESSURE SECTION
BELT DRIVE

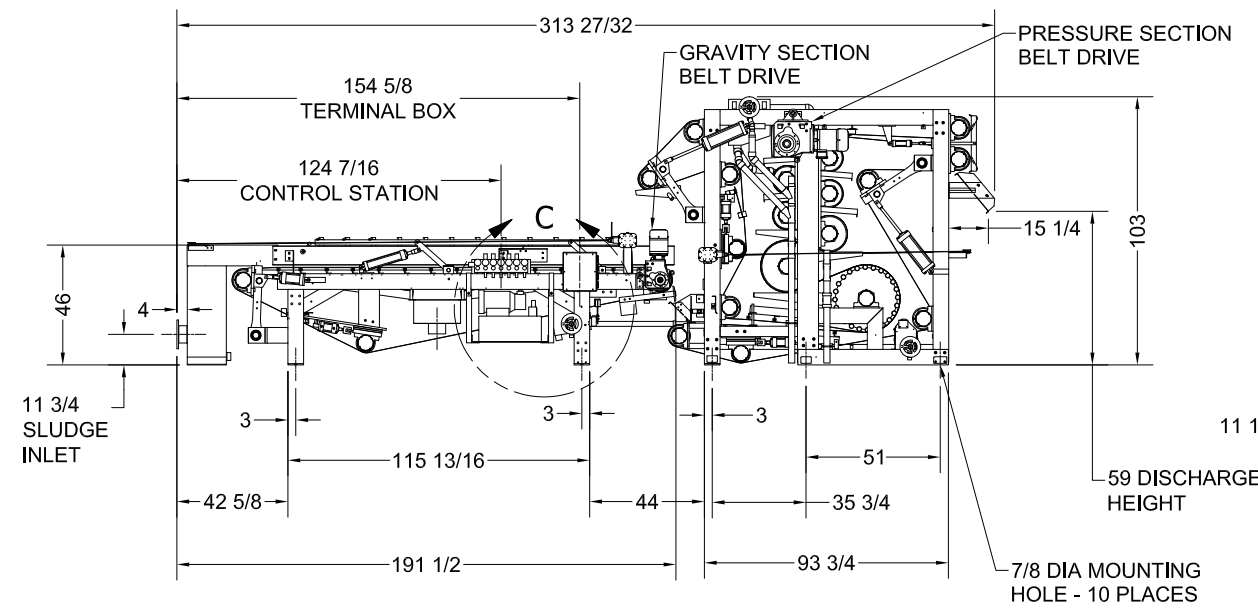


DETAIL C
HYDRAULIC CONTROLS
SCALE 1"=24"



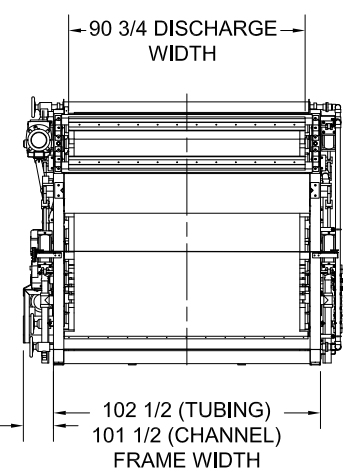
DETAIL C
PNEUMATIC CONTROLS
SCALE 1"=24"

NOTES:
DETAIL C WILL VARY DEPENDING ON IF SYSTEM UTILIZES PNEUMATICS OR HYDRAULICS
LIFTING POINTS ARE MIN. 1 1/4" DIA FOR ALL LOCATIONS
LOCATION OF PLANT WATER CONNECTION FOR BELT WASH SYSTEM VARIES ACC. TO LOCATION OF WASH WATER BOOSTER PUMP AND USE OF OPTIONAL WASH WATER RECYCLE.
GBT SECTION DRY WEIGHT = 5,900 LBS
GBT SECTION WET WEIGHT = 7,350 LBS
PRESSURE SECTION DRY WEIGHT = 14,350 LBS
PRESSURE SECTION WET WEIGHT = 15,900 LBS



11 3/4
SLUDGE
INLET

7/8 DIA MOUNTING
HOLE - 10 PLACES



11 1/2

REVISION HISTORY				
ZONE	REV	DESCRIPTION	DATE	APPROVED
	6	UPDATED DWG # & TITLE BLOCK DESCRIPTION	9/17/19	DANIELT

DRAWN TMP	6/19/2013
APPROVED	
G.E.C. TOLERANCES UNLESS OTHERWISE SPECIFIED	
FRACTIONAL DIM	± 1/64
DECIMAL DIM	± .005
ANGLE	± 1/2
SURFACE FINISH	125

CHARTER MACHINE COMPANY			
55 WESTER AVENUE, METUCHEN NJ 08840			
TITLE 3 BELT TOWER PRESS TP2293S & FLOC TANK MACHINE VIEWS			
SIZE C	PROJECT	DWG NO TP2293S02	REV 6
SCALE 1"=48"		SHEET 1 OF 1	