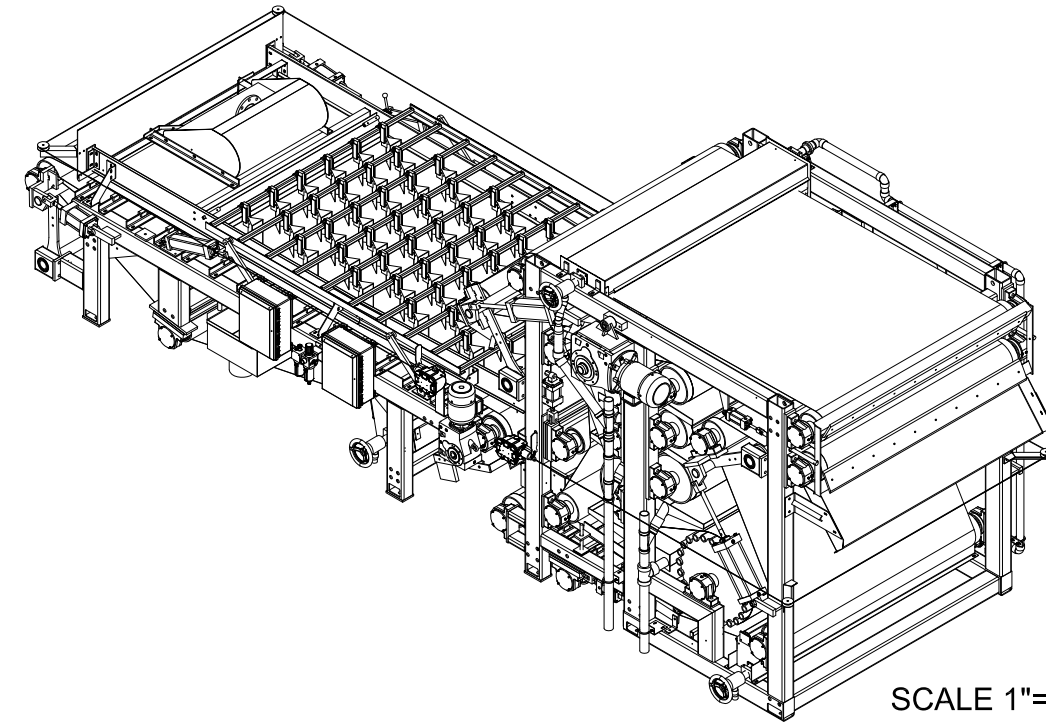
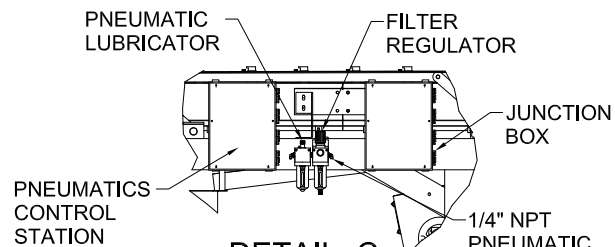
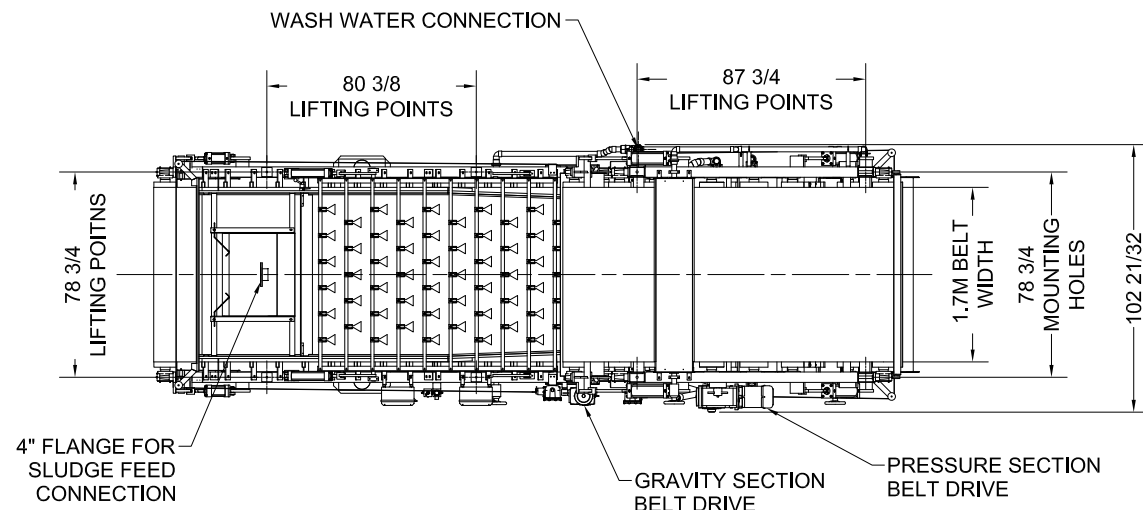


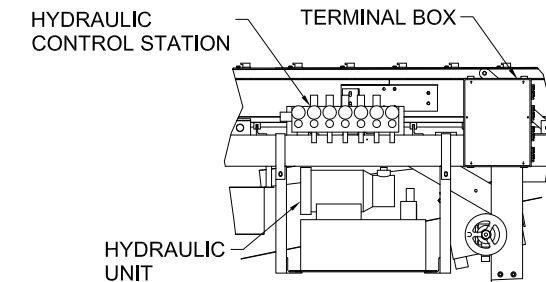
VIEW D-D  
SCALE 1"=48"



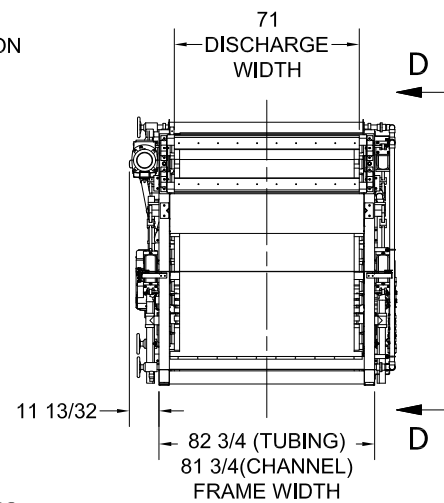
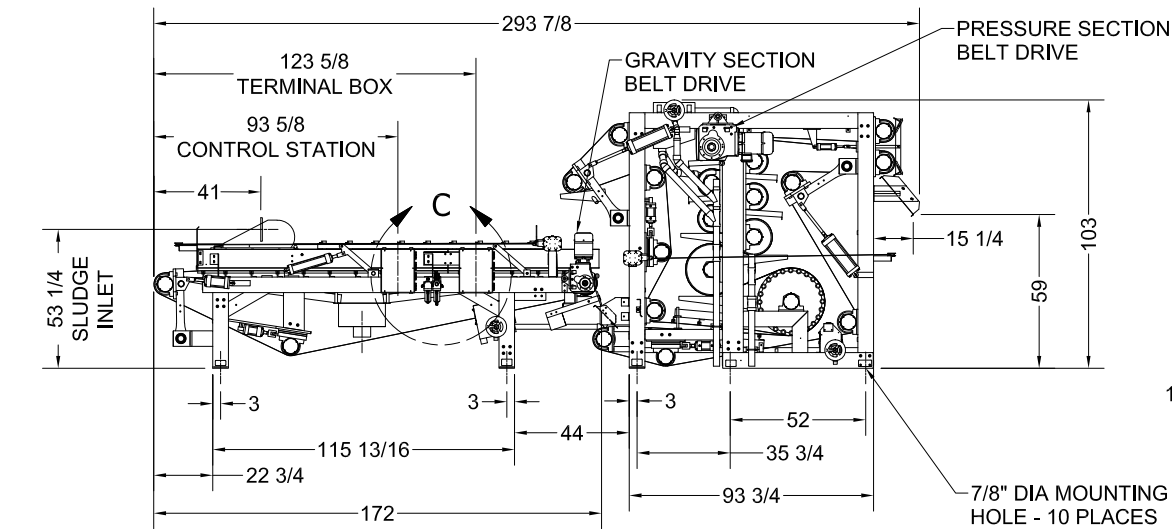
SCALE 1"=32"



DETAIL C  
PNEUMATIC CONTROLS  
SCALE 1"=24"



DETAIL C  
HYDRAULIC CONTROLS  
SCALE 1"=24"



NOTES:

- DETAIL C WILL VARY DEPENDING ON IF SYSTEM UTILIZES PNEUMATICS OR HYDRAULICS
- LOCATION OF PLANT WATER CONNECTION FOR BELT WASH SYSTEM VARIES ACC. TO LOCATION OF WASH WATER BOOSTER PUMP AND USE OF OPTIONAL WASH WATER RECYCLE.
- LIFTING POINTS ARE MIN. 1 1/4" DIA FOR ALL LOCATIONS
- GBT SECTION DRY WEIGHT = 5,100 LBS  
GBT SECTION WET WEIGHT = 6,250 LBS
- PRESSURE SECTION DRY WEIGHT = 12,500 LBS  
PRESSURE SECTION WET WEIGHT = 13,750 LBS

NOTE: EDIT THIS DWG. WITH **INVENTOR** ONLY

REVISION HISTORY				
ZONE	REV	DESCRIPTION	DATE	APPROVED
	6	UPDATED MACHINE DRAWING NUMBER	9/17/19	DANIELT

DRAWN TMP	6/19/2013	<b>CHARTER MACHINE COMPANY</b> 55 WESTER AVENUE, METUCHEN NJ 08840		
APPROVED				
G.E.C. TOLERANCES UNLESS OTHERWISE SPECIFIED		TITLE <b>3-BELT TOWER PRESS TP1793S MACHINE VIEWS</b>		
FRACTIONAL DIM	± 1/64	SIZE	PROJECT	DWG NO
DECIMAL DIM	± .005	<b>C</b>		<b>TP1793S02</b>
ANGLE	± 1/2			REV <b>6</b>
SURFACE FINISH	125	SCALE 1"=48"		SHEET 1 OF 1