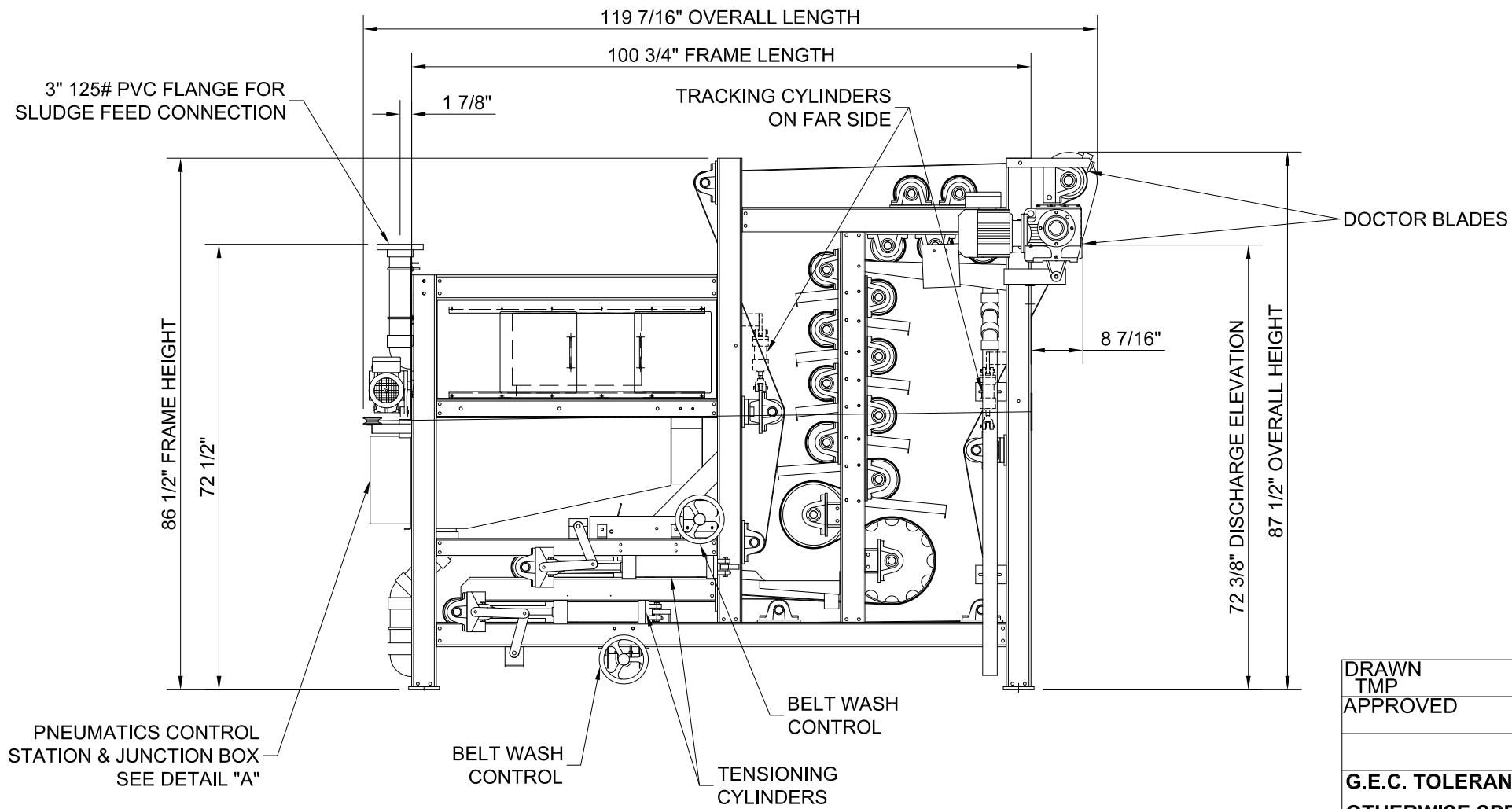


DETAIL "A"



NOTES:
 DRY WEIGHT = 4,100 LBS.
 WET WEIGHT = 4,600 LBS.

DRAWN TMP	7/31/12	CHARTER MACHINE COMPANY 55 WESTER AVE METUCHEN N.J. 08840		
APPROVED				
G.E.C. TOLERANCES UNLESS OTHERWISE SPECIFIED		TITLE TOWER PRESS 07.5 MACHINE VIEWS		
FRACTIONAL DIM ±1/64		SIZE	DWG NO.	REV
DECIMAL DIM ±.005		B	TP07.5-02	5
ANGLE ± 1/2		SCALE	SHEET 1 OF 1	
SURFACE FINISH 125		1/2" = 1'-0"		